

**CONDITION ASSESSMENT & LOAD EVALUATION
9TH STREET BRIDGE OVER SYDENHAM RIVER
CITY OF OWEN SOUND**

**APPENDIX "E"
PHOTOGRAPHS**



Photo 1 (IMG-1034)– View of the structure looking East.



Photo 2 (IMG-1035) – View of the structure from the south west.

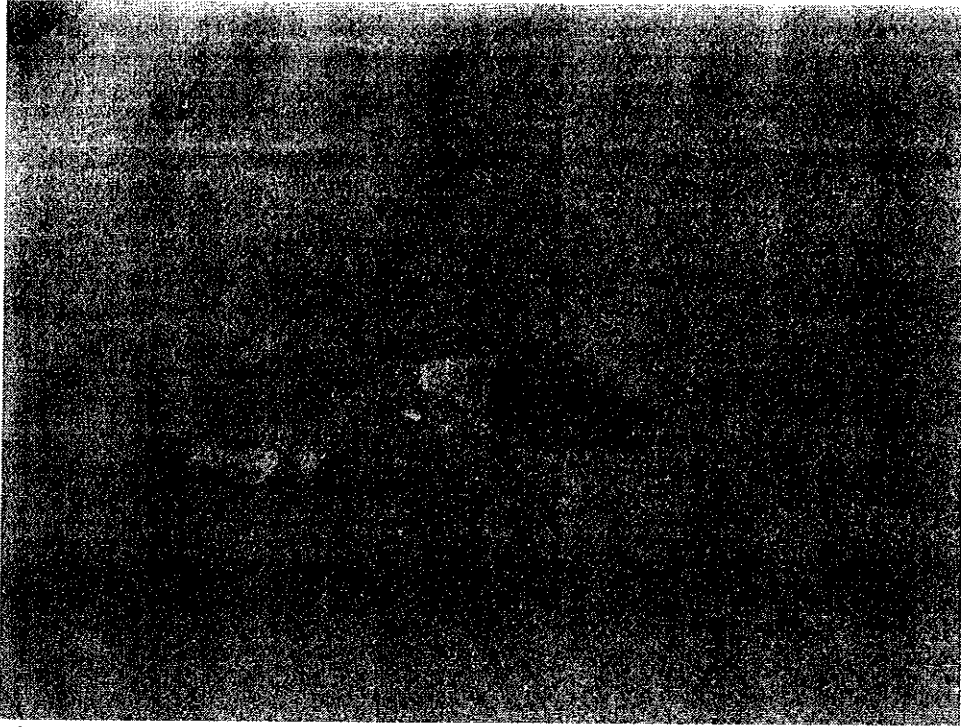


Photo 3 (IMG-1036) – Concrete wearing surface. Note the spalling. Patch work has been completed, however spalling is continuing.



Photo 4 (IMG-1038) – View of the barrier post. Note the spalling exposing reinforcing steel.



Photo 5 (IMG 1042) – Barrier post in north west corner. Note crack below lamp post and corrosion staining.

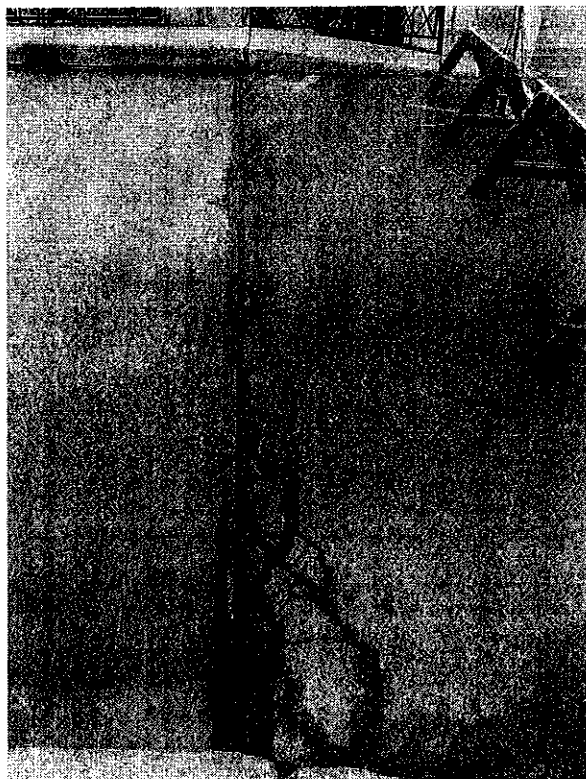


Photo 6 (IMG-1043) – View of west joist. Note break in armorage and cracking in west approach.

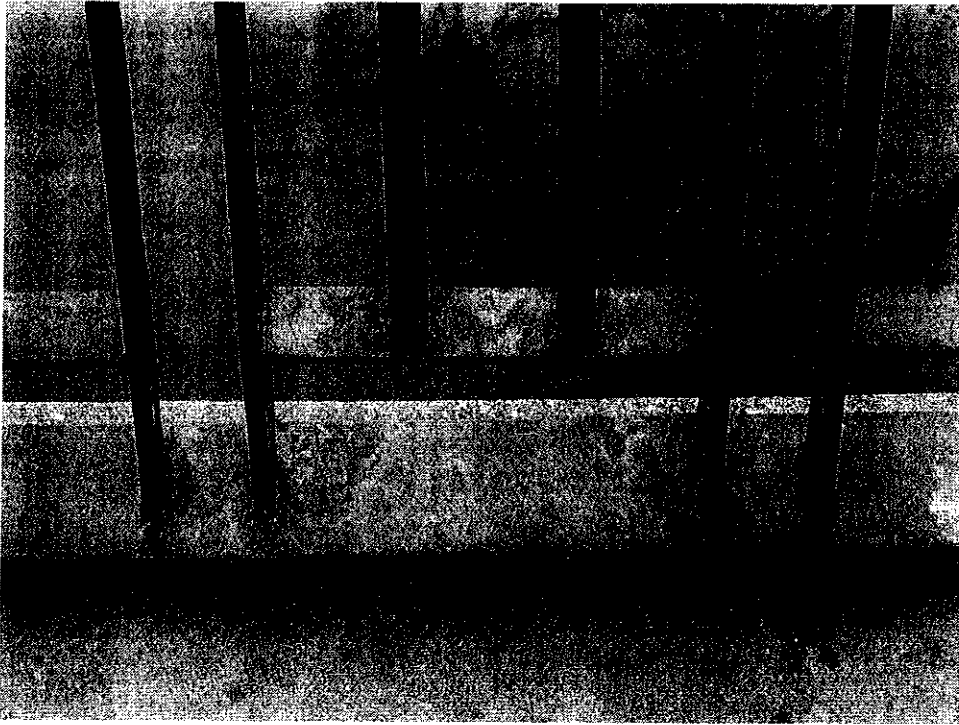


Photo 7 (IMG-1044) – Railing system. Note localized corrosion at bottom of vertical members.



Photo 8 (IMG-1047) – View of north east approach sidewalk. Note settlement.



Photo 9 (IMG-1048) – South west approach guide rail is permanently deformed and sections are missing.



Photo 10 (IMG-1052) – Deck soffit in south west corner. Note spalling and delamination exposing reinforcing steel.



Photo 11 (IMG-1055) – Underside of the north interior girder near the midspan. Note the delamination of the patch work.



Photo 12 (IMG-1059) – North interior girder of patchwork near midspan after toning was completed.

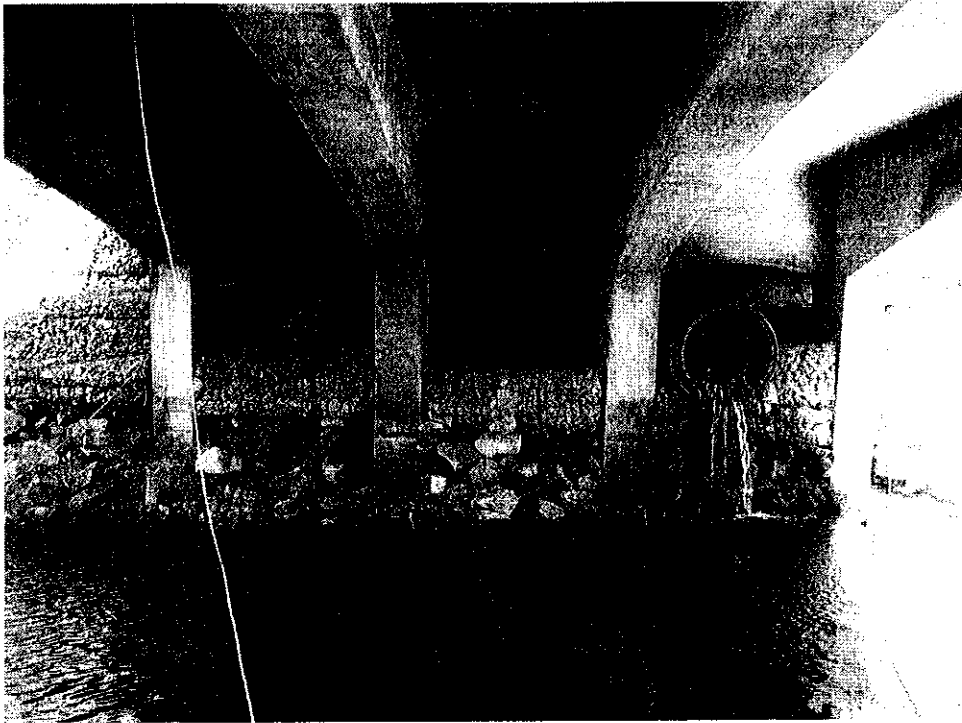


Photo 13 (IMG-1058) – View of intermediate piers on east side. Note vertical cracks in the two exterior piers.

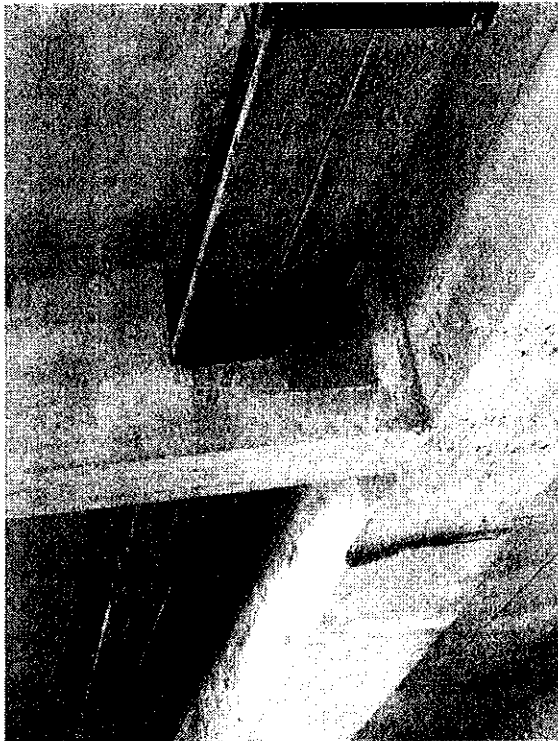


Photo 14 (IMG-1061) – Boxed out utility duct passing through centre purlin. Note the existing patchwork in the deck soffit and the vertical crack in the bottom north corner of the stringer.

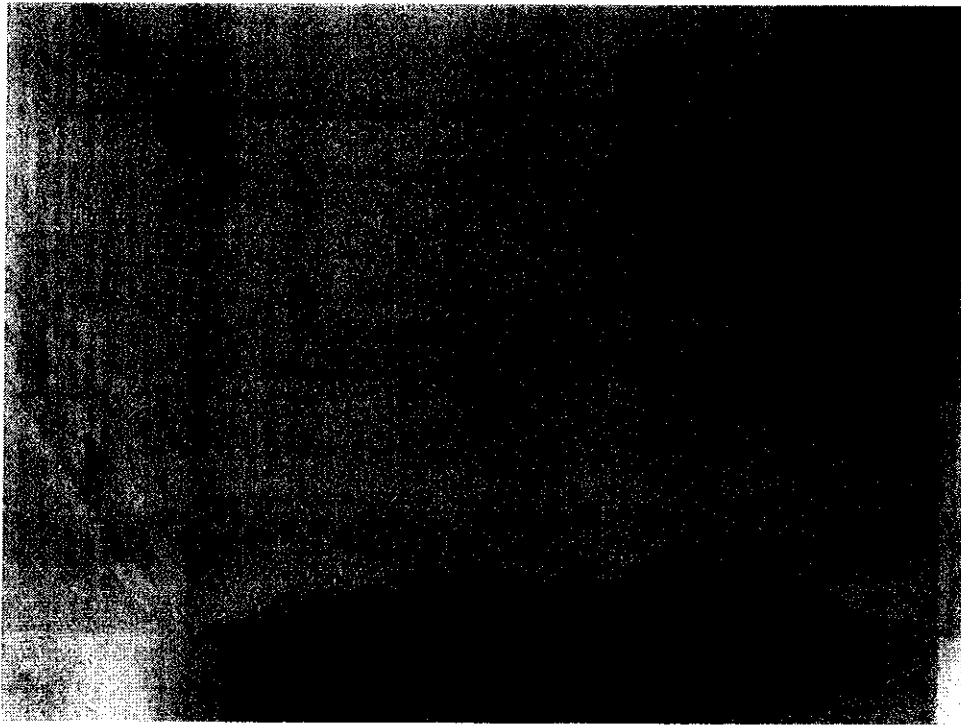


Photo 15(IMG-1064) Diaphragm in North East corner in bridge. Note narrow vertical cracks.

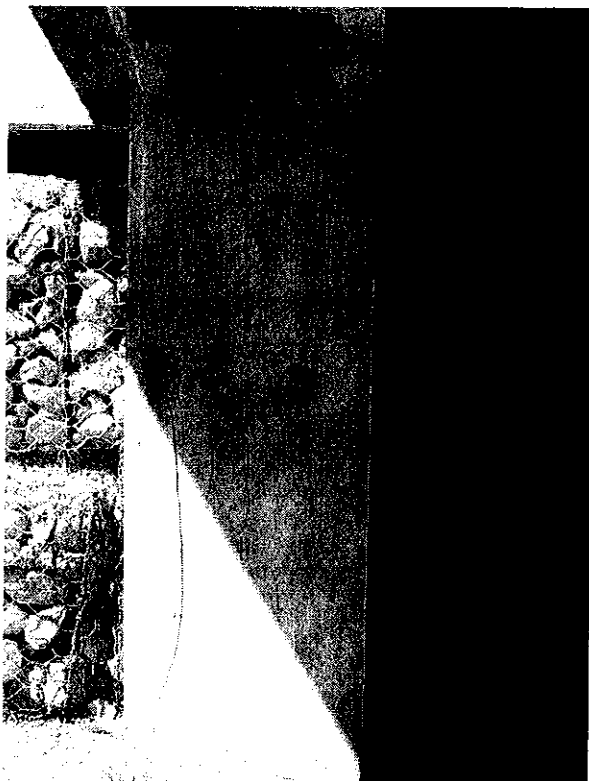


Photo 16 (IMG-1065) – North West intermediate pier. Note vertical cracks in patched area.

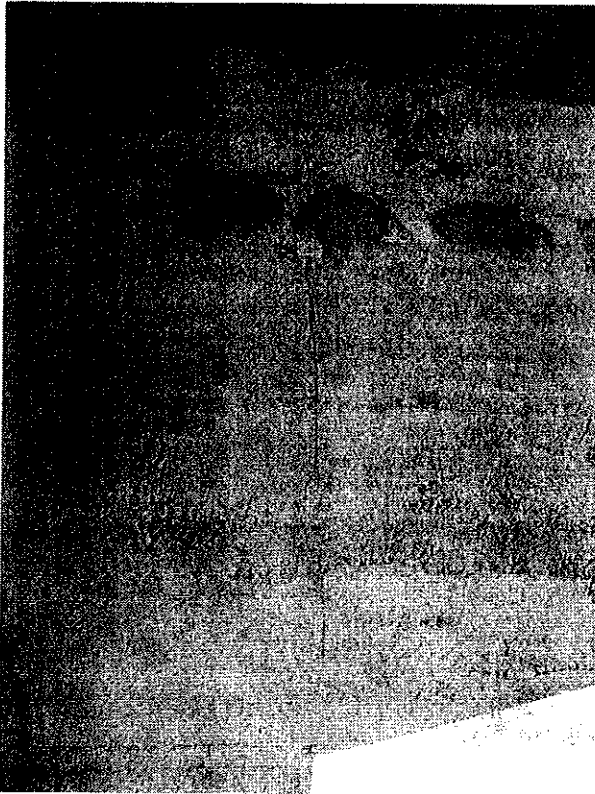


Photo 17 (IMG-1066) – Interior north east pier and girder. Note large vertical crack.



Photo 18 (IMG-1067) – Utility along underside of north span. Note extensive patching in area of duct.



Photo 19 (IMG-4757) – Steel culverts in south west retaining wall. Note both bottoms are badly corroded. The water is causing very severe disintegration of the retaining wall.