



# Regional Recreation Centre

PUBLIC INFORMATION SESSION  
02.01.10



# AGENDA

- Welcome
- Introductions, Review of Agenda + Comments  
Steering Committee
- Presentation of Building Schematics  
STP+W
- Follow up Items from Public Consultation
- Construction Update  
Construction Management

Mayor Ruth Lovell Stanners

Jim McManaman      Chair, Regional Recreation

Duff Balmer

Design Architect,

Jim McManaman



# THE PROGRAM

	Base Building Component
A	Aquatics
B	Arenas
C	Multi – Purpose
D	Gymnasium and Track
E	Fitness
F	Common Areas/ Administration



# CONTEXT

## Capitalizing on a Unique Setting



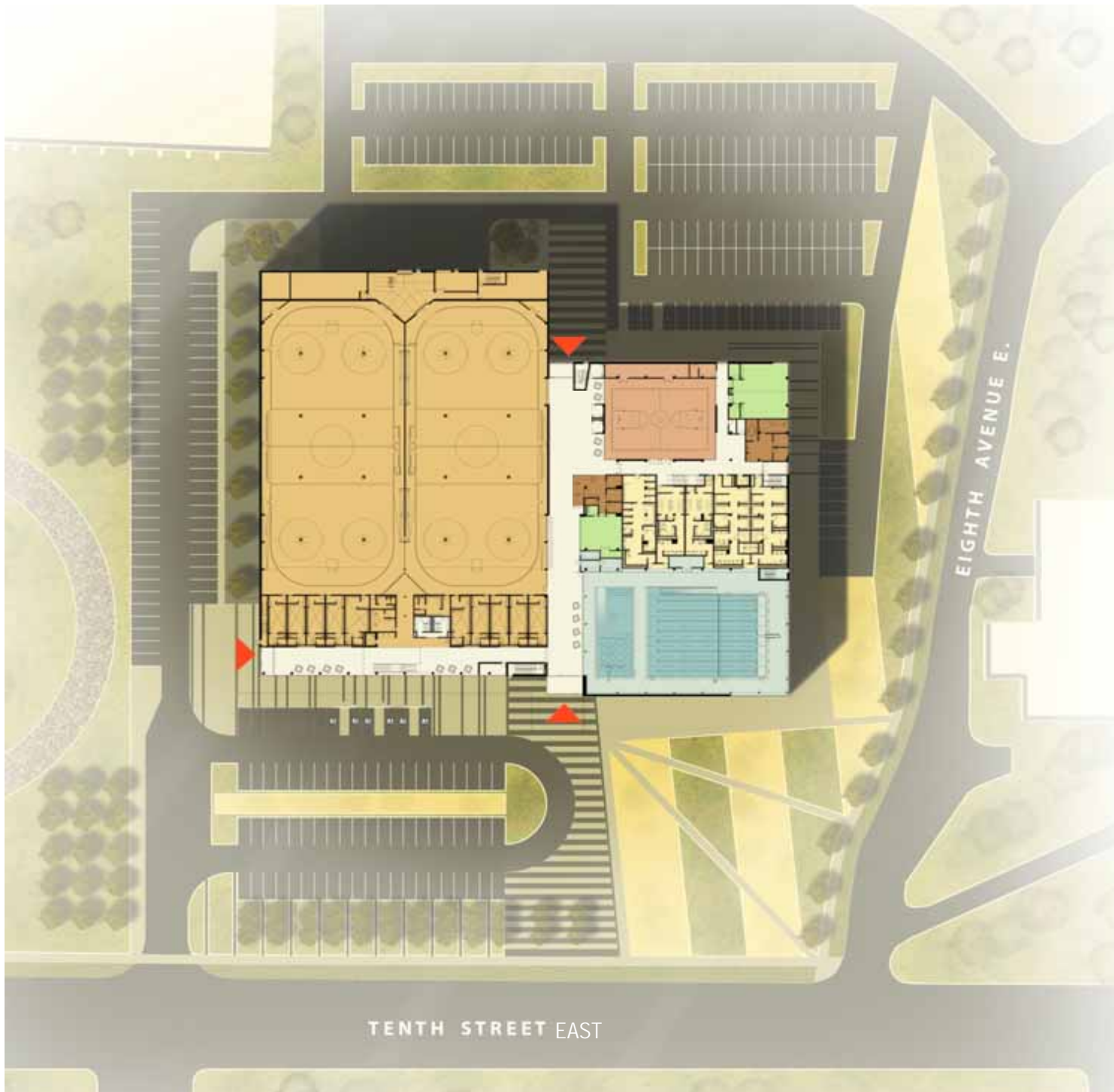
## Site Goals

- Create a welcoming and accessible site with clear and identifiable drop off and entry points
- Add definition to the streetscape and park edges
- Develop a unified sustainable design approach to site and building
- Integrate site concept with existing park features and infrastructure
- Create a dynamic new focal point for the whole Region

# SITE PLAN



-  ARENAS
-  POOL
-  CHANGE ROOMS
-  GYMNASIUM
-  MULTI PURPOSE
-  ADMINISTRATIVE



TENTH STREET EAST

EIGHTH AVENUE E.



# AQUATICS



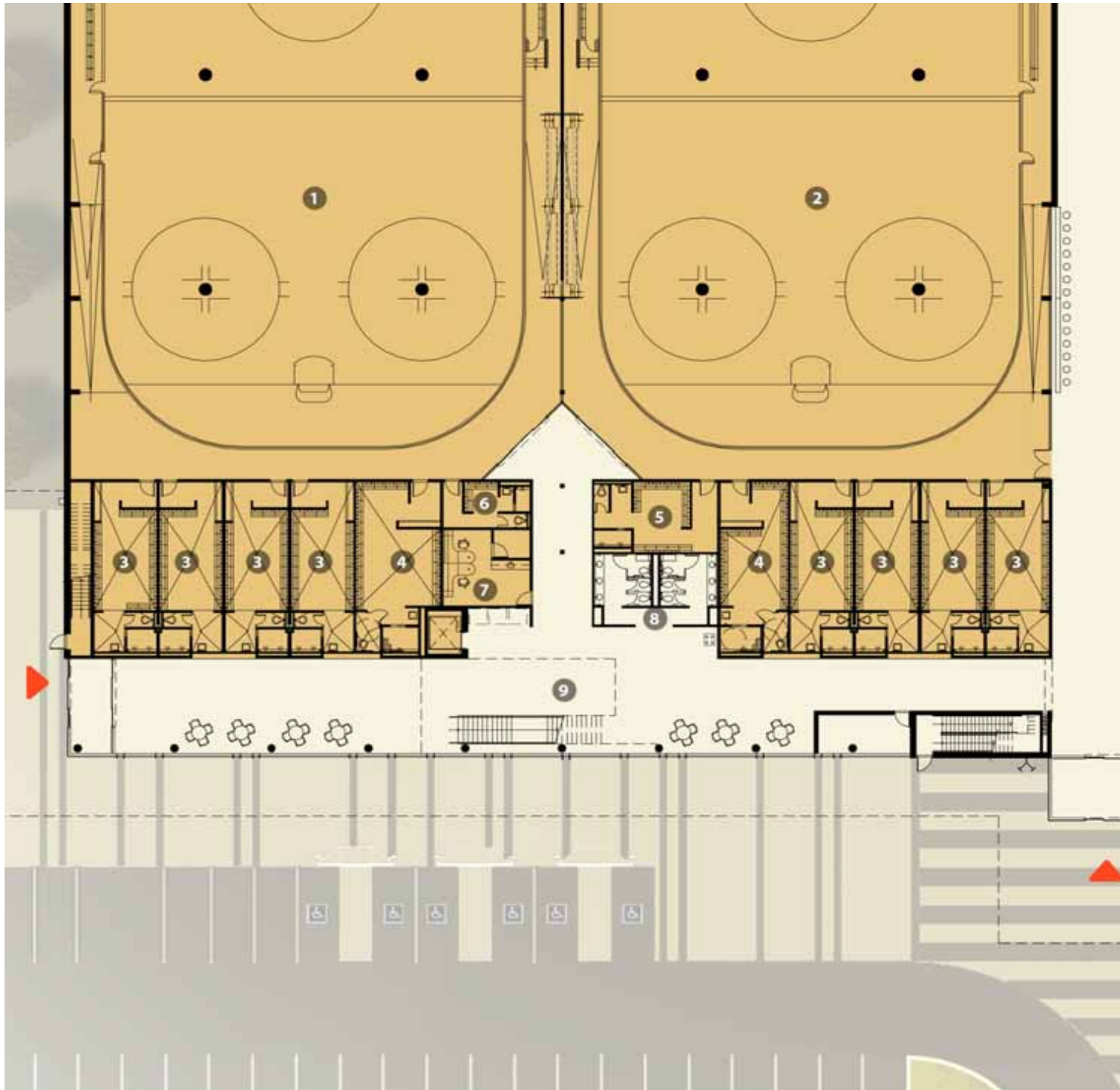
- 1. LAP POOL
- 2. LEISURE POOL
- 3. POOL STORAGE
- 4. AQUATIC MONITOR
- 5. AQUATIC ASSIST. OFFICE
- 6. FAMILY CHANGE ROOM
- 7. FEMALE YOUTH CHANGE ROOM
- 8. MALE YOUTH CHANGE ROOM
- 9. FEMALE ADULT CHANGE ROOM
- 10. MALE ADULT CHANGE ROOM
- 11. PROGRAM ROOM
- 12. CONTROL / WELCOME
- 13. OFFICE

# GYMNASIUM



1. GYMNASIUM
2. GYM. STORAGE
3. MULTI PURPOSE ROOM
4. MP ROOM STORAGE
5. OFFICE
6. LUNCH ROOM
7. COPY & STORAGE
8. PUBLIC WASHROOMS








# ARENAS

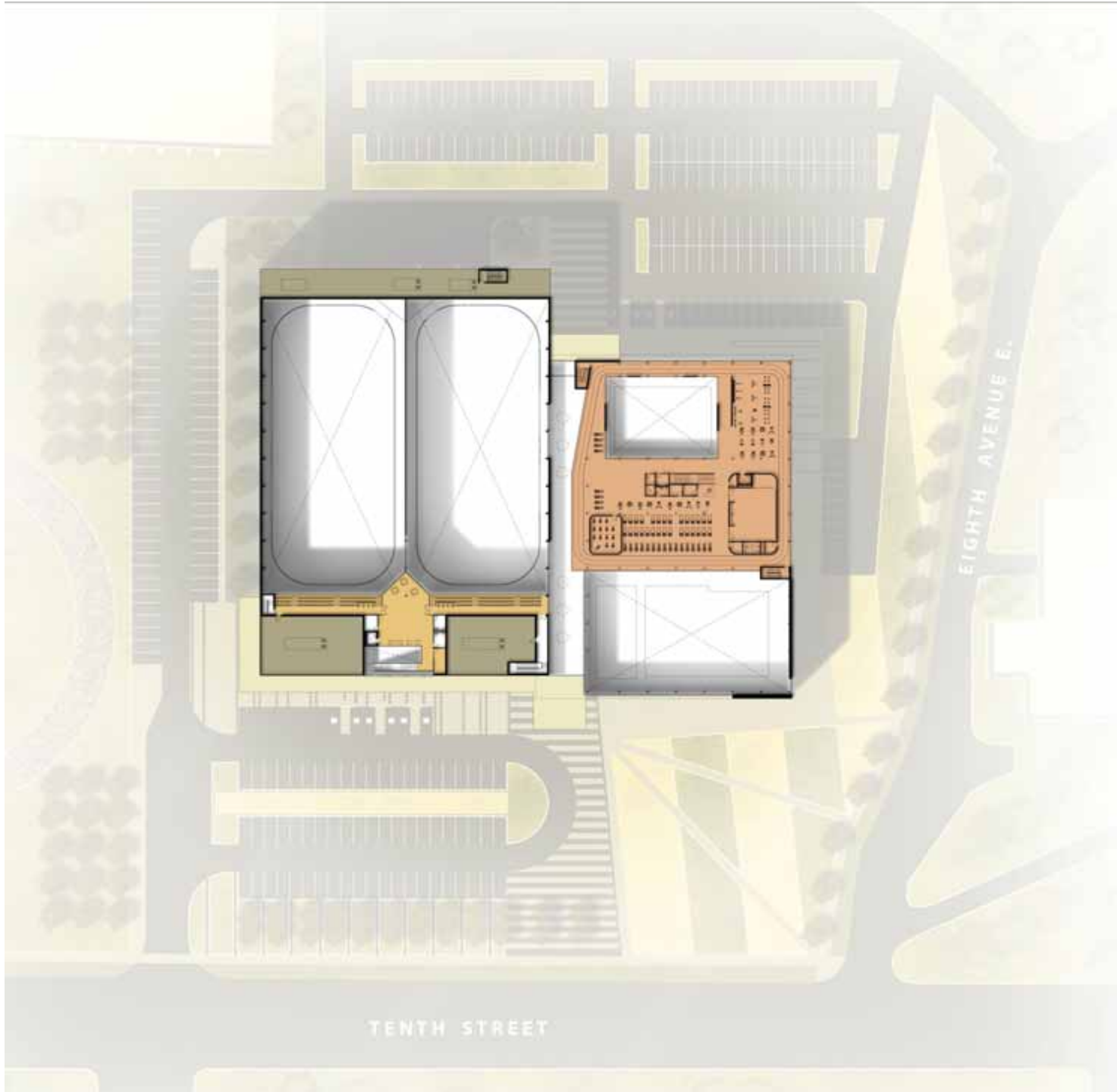


- 1. ARENA (1)
- 2. ARENA (2)
- 3. CHANGE ROOMS
- 4. BARRIER FREE CHANGE ROOMS
- 5. REFEREE CHANGE ROOM
- 6. MINORITY CHANGE ROOM
- 7. RINK OFFICE
- 8. PUBLIC WASHROOMS
- 9. ARENA LOBBY

# SECOND FLOOR PLAN



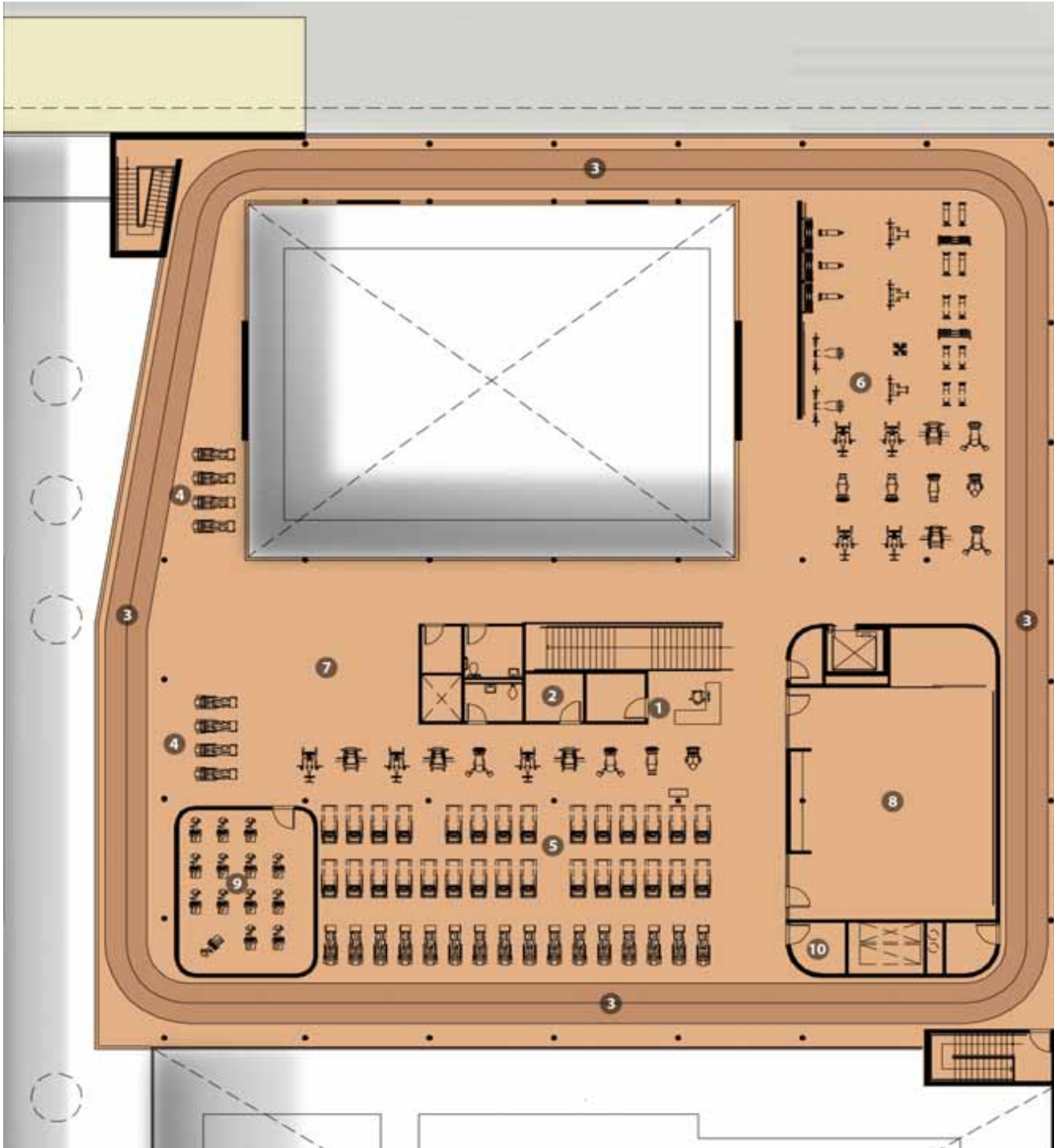
-  ARENA VIEWING
-  FITNESS
-  ROOF TOP MECHANICAL SPACE

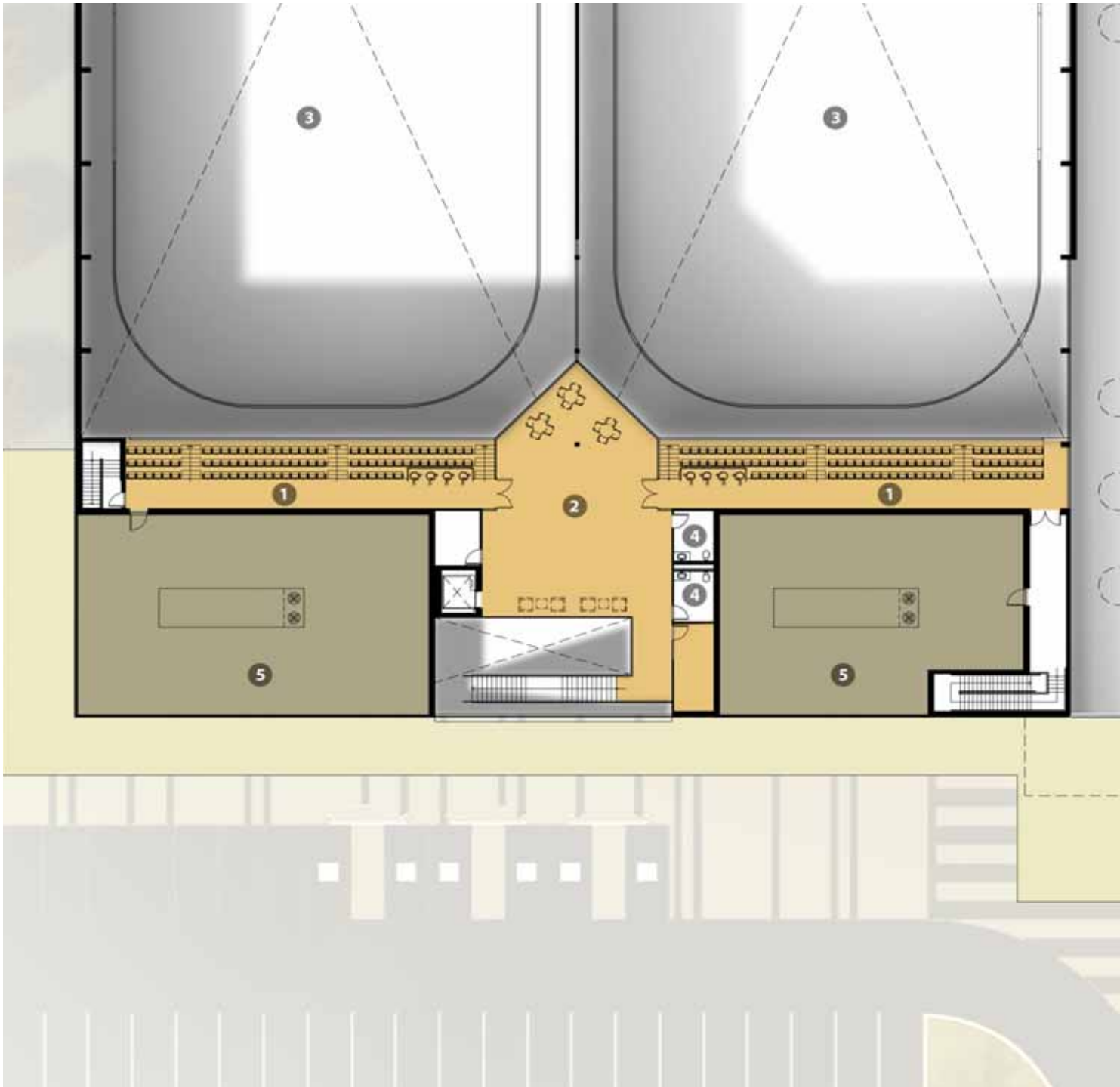


# FITNESS



1. FITNESS COUNTER / OFFICE
2. FITNESS TEST ROOM
3. TRACK
4. CARDIO
5. STRENGTH TRAINING / CARDIO
6. FREE WEIGHTS
7. STRETCHING
8. FITNESS STUDIO
9. CYCLING ROOM
10. CARDIAC CARE ROOM





# ARENA VIEWING



- 1. ARENA VIEWING SEATING
- 2. ARENA VIEWING LOBBY
- 3. OPEN TO RINK BELOW
- 4. WASHROOMS
- 5. ROOF TOP MECHANICAL SPACE



VIEW FROM SOUTHWEST ALONG TENTH STREET EAST





VIEW FROM SOUTHEAST ALONG EIGHTH AVENUE EAST



SOUTH ELEVATION



SOUTH ELEVATION



WEST ELEVATION



EAST ELEVATION



NORTH ELEVATION

# MATERIAL PALETTE



# SUSTAINABLE DESIGN HIGHLIGHTS

## A LEED Gold Target

### Site

- Drought resistant indigenous planting, rainwater harvesting cistern and permeable paving
- Reduction of 'heat island effect' through reflective roof areas
- Light pollution reduction through zero-cut off fixtures

### Building

- Local and recycled Content
- Low embedded energy building materials

### Transportation

- Accommodation of public transit + bicycle racks

### Energy

- Natural day-lighting of spaces
- High performance building envelope
- Heat recovery system on arena refrigeration
- Energy efficient lighting fixtures

